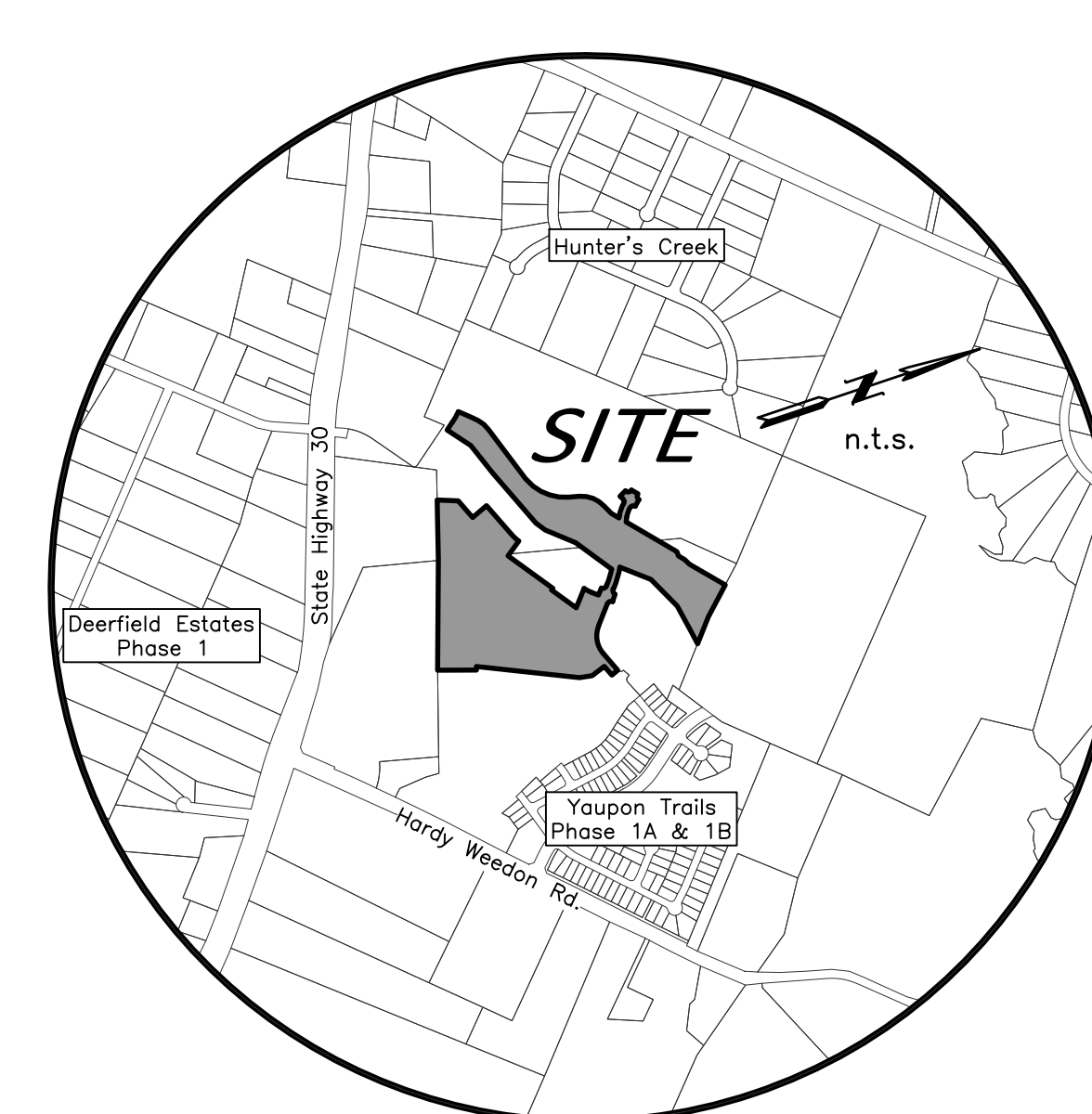


Scale: 1"=50'



VICINITY MAP

FINAL PLAT

YAUPON TRAILS PHASES 3A & 4A

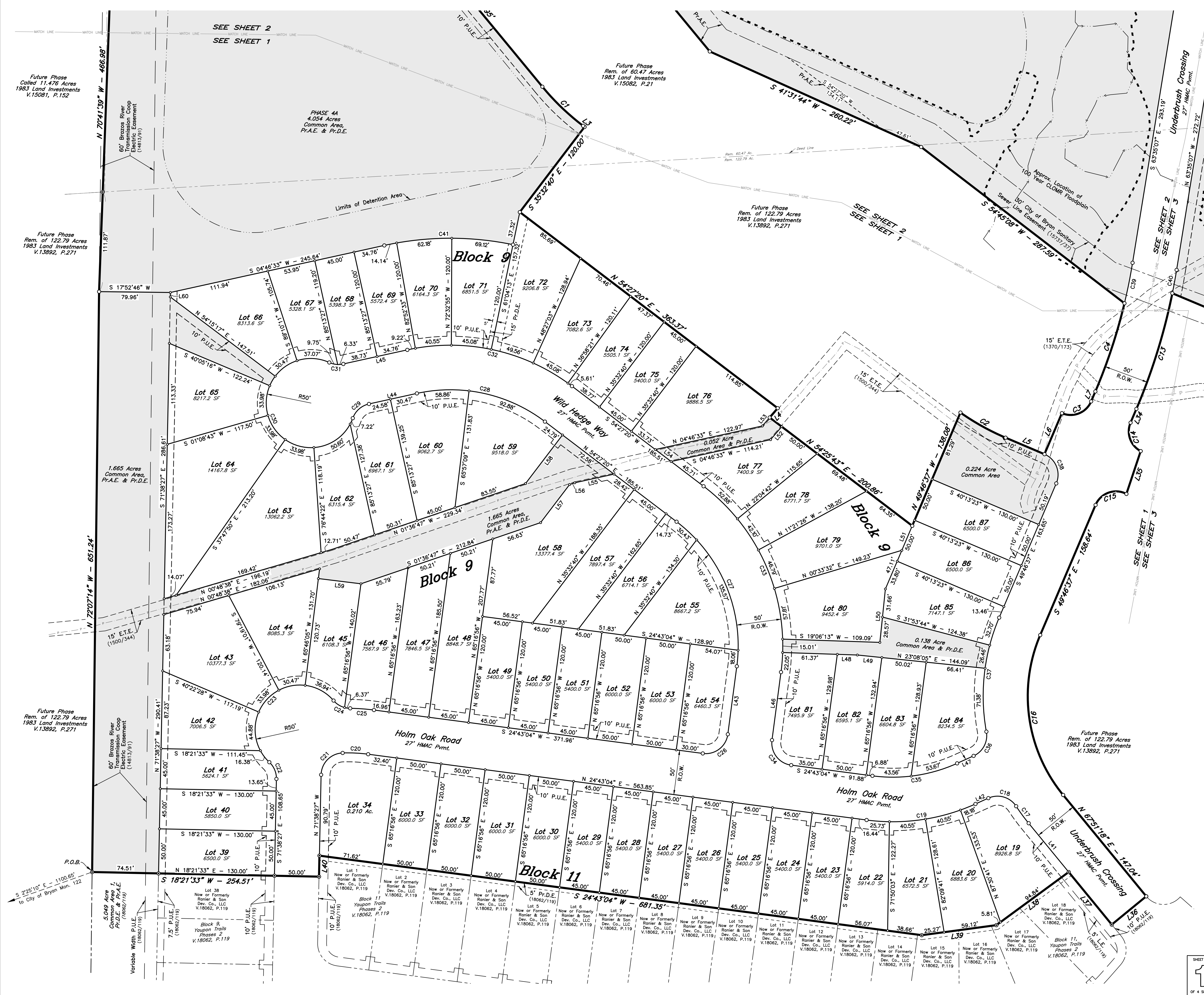
PHASE 3A  
LOTS 39-87, BLOCK 9  
LOTS 19-34, BLOCK 11

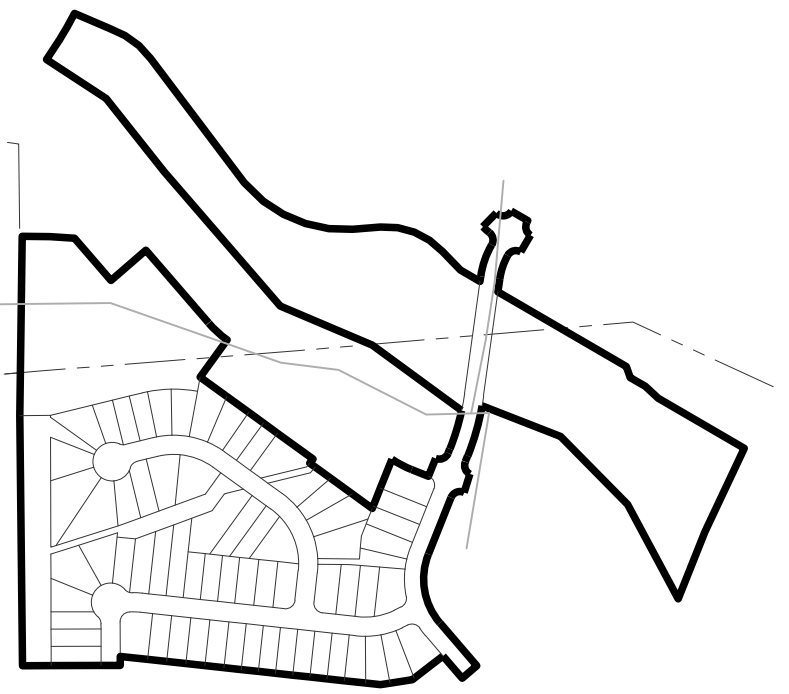
PHASE 4A  
COMMON AREA & Pr.D.E.  
31.896 ACRES

MARIA KEGANS LEAGUE, A-28  
BRYAN, BRAZOS COUNTY, TEXAS  
FEBRUARY, 2023  
SCALE 1" = 50'

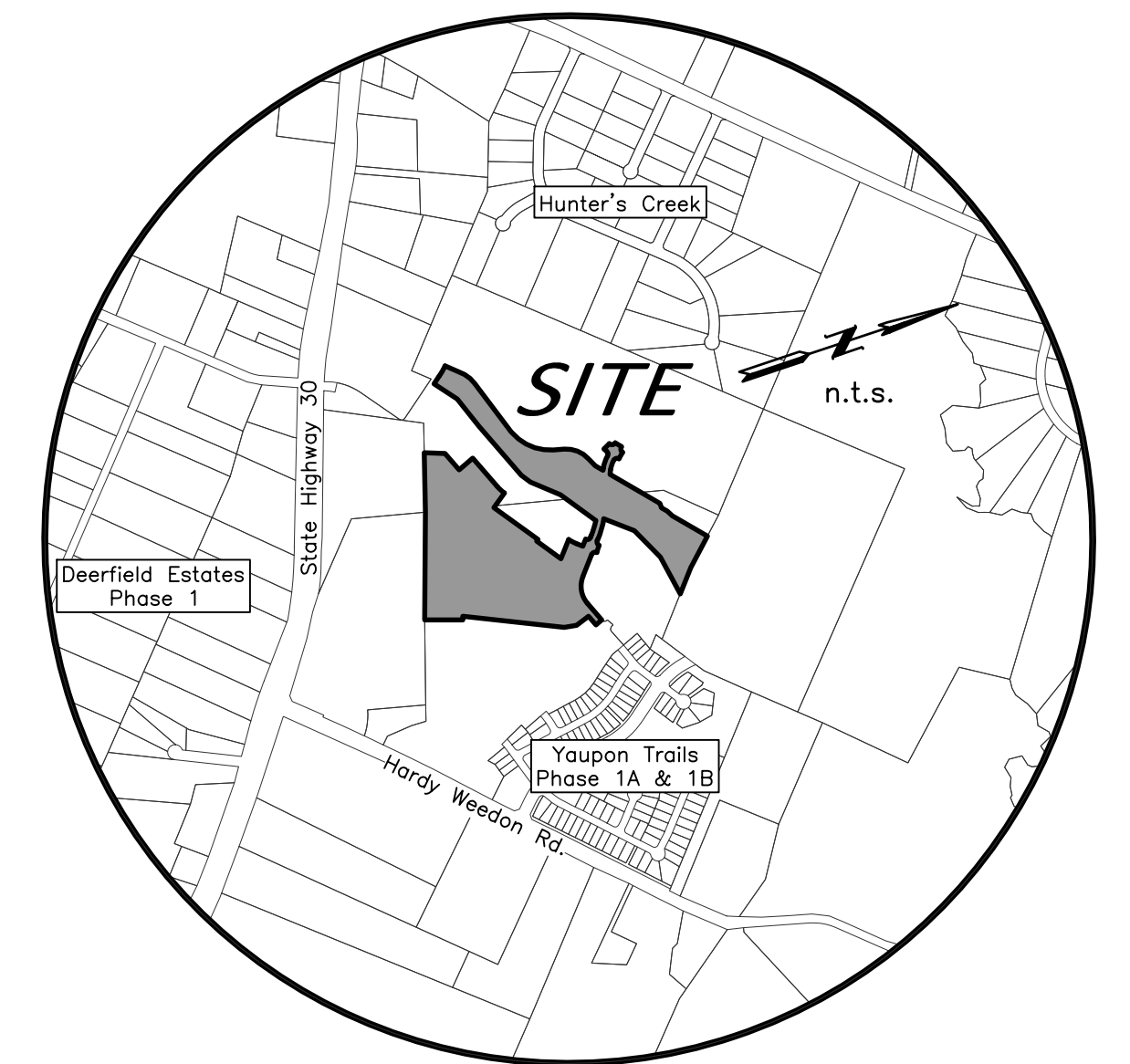
Engineer: TPBLS No. 12327  
Schultz Engineering, LLC  
911 Southwest Parkway East  
College Station, Texas 77840  
(979) 764-3900  
Surveyor: Texas Survey Firm No. 10103300  
McClure & Browne Engineering/Surveying, Inc.  
1008 Woodcreek Dr., Suite 103  
College Station, Texas 77845  
(979) 693-3838

SHEET NO.  
1  
OF 4 SHEETS





Scale: 1"=50'



VICINITY MAP

FINAL PLAT

YAUPON TRAILS PHASES 3A & 4A

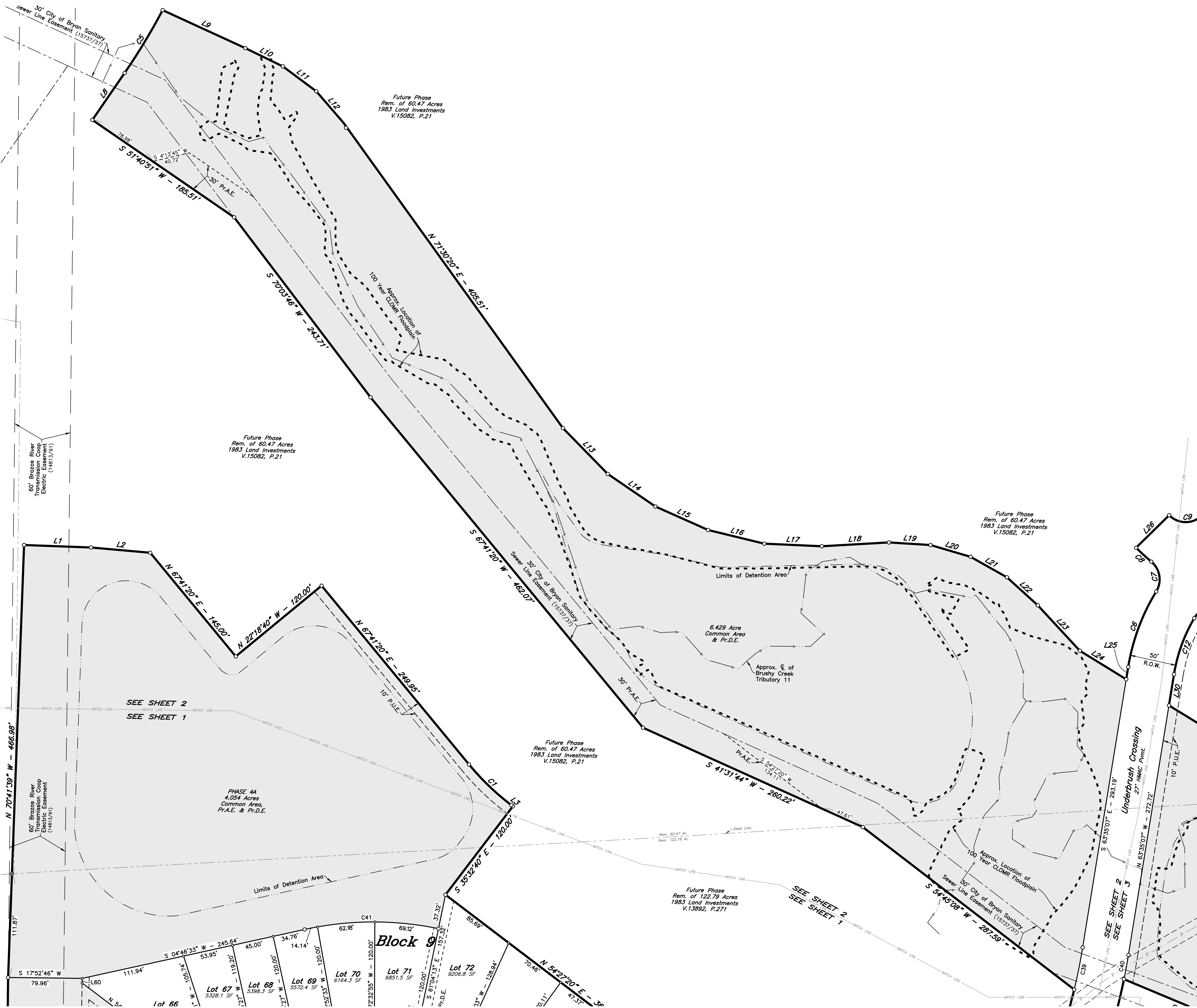
PHASE 3A  
LOTS 39-87, BLOCK 9  
LOTS 19-34, BLOCK 11  
PHASE 4A  
COMMON AREA & Pr.D.E.  
31.896 ACRES

MARIA KEGANS LEAGUE, A-28  
BRYAN, BRAZOS COUNTY, TEXAS  
FEBRUARY, 2023  
SCALE 1" = 50'

2 OF 4 SHEETS

Owner:  
Ranier & Son Development Company, LLC  
4090 S.H. 6 South  
College Station, Texas 77845  
(979) 690-1222

Engineer: TPBELS No. 12327  
Schultz Engineering, LLC  
911 Southwest Parkway East  
College Station, Texas 77840  
(979) 764-3900  
Surveyor: Texas Survey Firm No. 10103300  
McCure & Browne Engineering/Surveying, Inc.  
1008 Woodcreek Dr., Suite 103  
College Station, Texas 77845  
(979) 693-3838



Future Phase  
Rem. of 60.47 Acres  
1983 Land Investments  
V.15082, P.21

Future Phase  
Rem. of 60.47 Acres  
1983 Land Investments  
V.15082, P.21

Future Phase  
Rem. of 60.47 Acres  
1983 Land Investments  
V.15082, P.21

Future Phase  
Rem. of 60.47 Acres  
1983 Land Investments  
V.15082, P.21

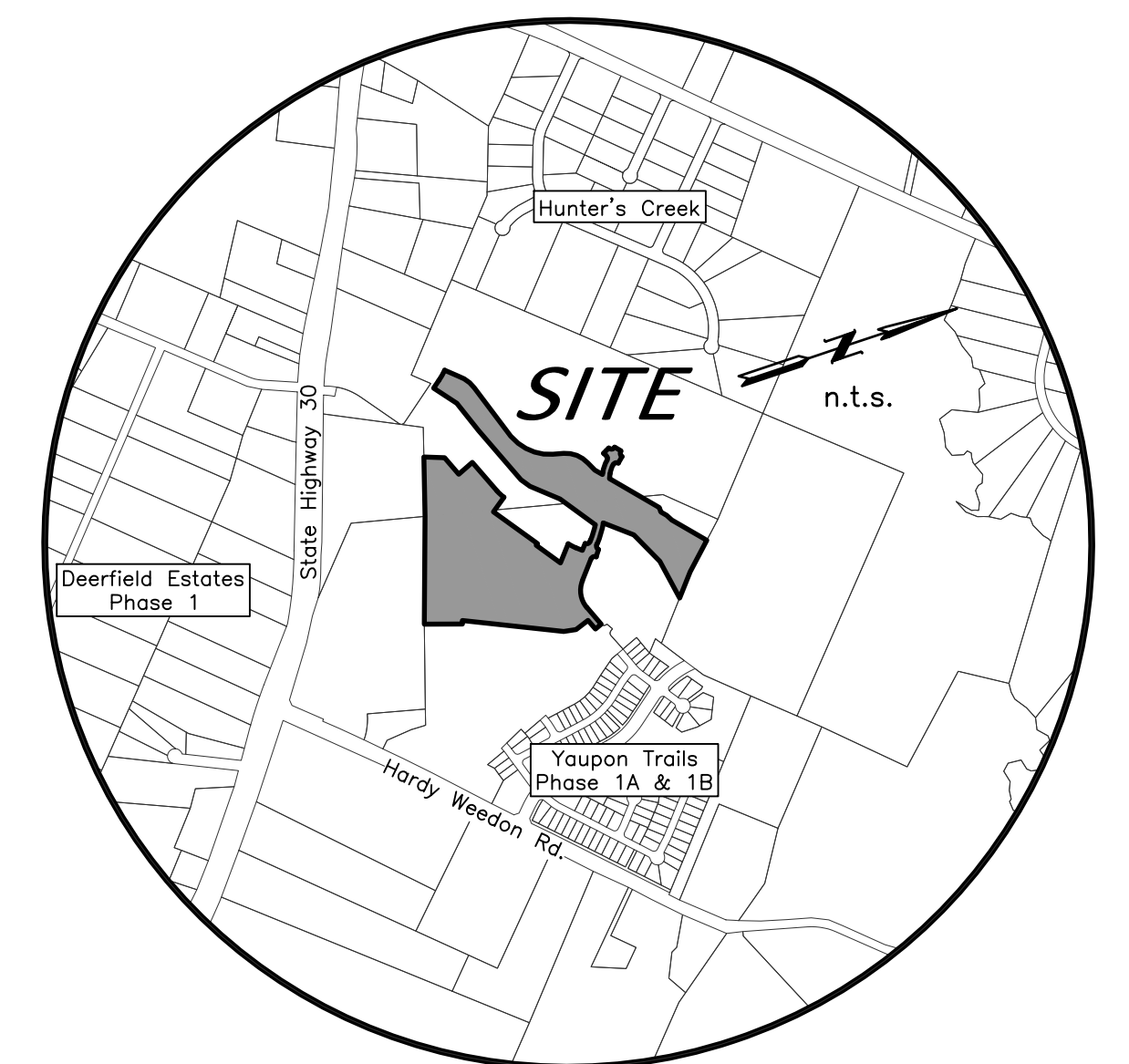
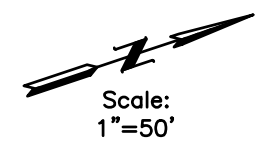
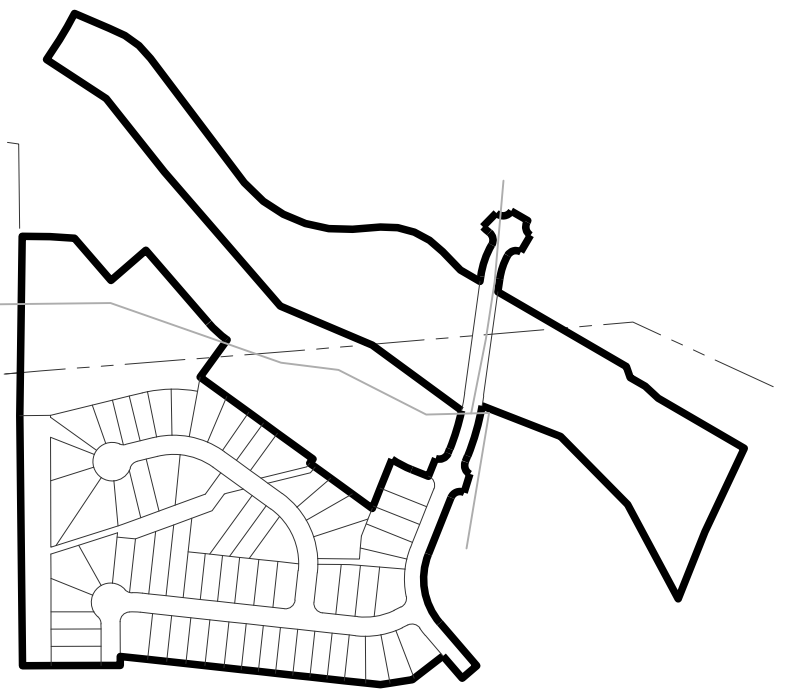
Future Phase  
Rem. of 122.78 Acres  
1983 Land Investments  
V.13892, P.271

PHASE 4A  
4.054 Acres  
Common Area,  
Pr.A.E. & Pr.D.E.

Block 9

Lot 67 5328.1 SF  
Lot 68 5398.3 SF  
Lot 69 5572.4 SF  
Lot 70 6164.3 SF  
Lot 71 8851.5 SF  
Lot 72 9206.8 SF

Engineer: TPBELS No. 12327  
Schultz Engineering, LLC  
911 Southwest Parkway East  
College Station, Texas 77840  
(979) 764-3900  
Surveyor: Texas Survey Firm No. 10103300  
McCure & Browne Engineering/Surveying, Inc.  
1008 Woodcreek Dr., Suite 103  
College Station, Texas 77845  
(979) 693-3838



VICINITY MAP

FINAL PLAT

YAUPON TRAILS PHASES 3A & 4A

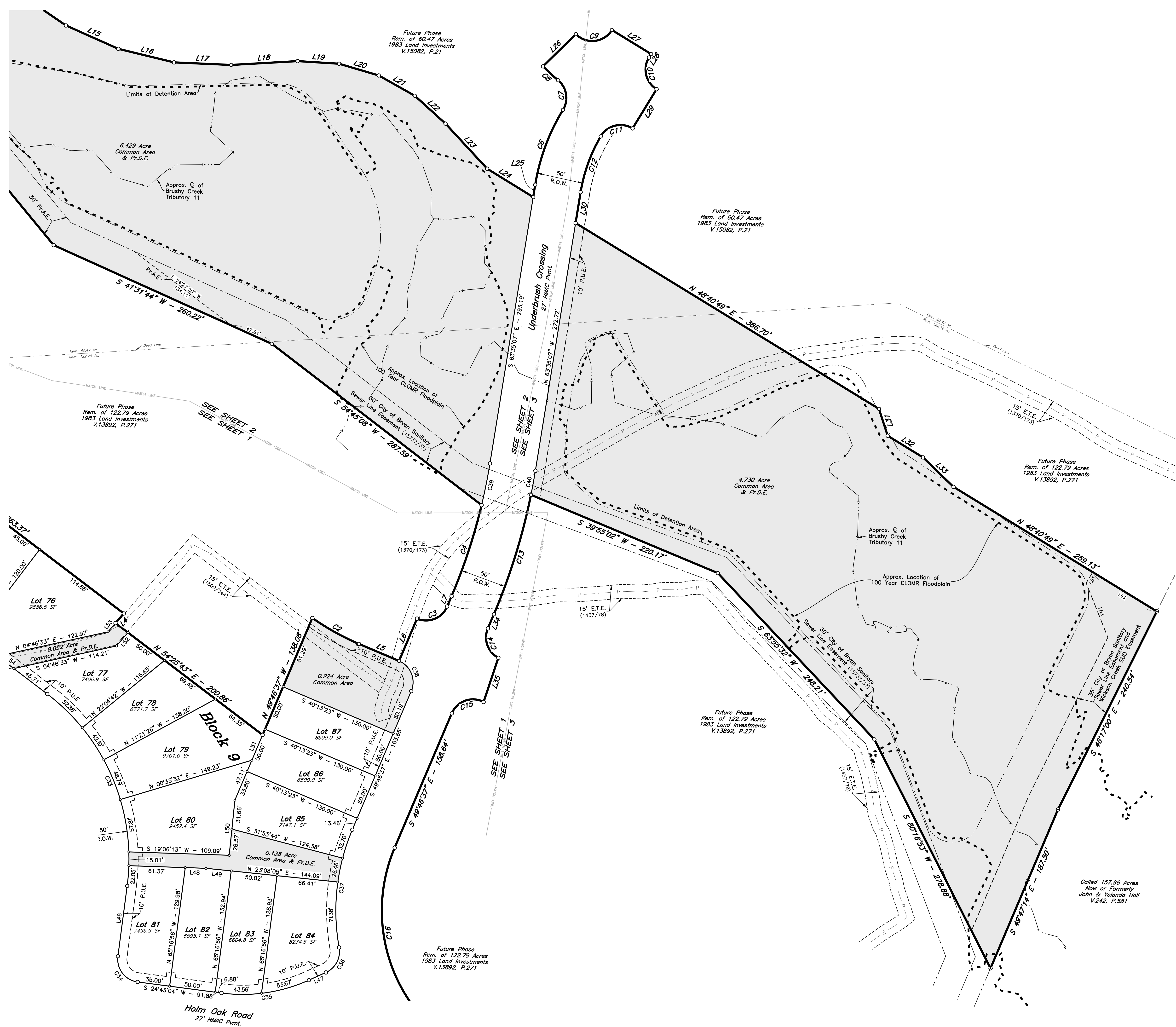
PHASE 3A  
LOTS 39-87, BLOCK 9  
LOTS 19-34, BLOCK 11  
PHASE 4A  
COMMON AREA & Pr.D.E.  
31.896 ACRES

MARIA KEGANS LEAGUE, A-28  
BRYAN, BRAZOS COUNTY, TEXAS  
FEBRUARY, 2023  
SCALE 1" = 50'

Engineer: TPBELS No. 12327  
Schultz Engineering, LLC  
911 Southwest Parkway East  
College Station, Texas 77840  
(979) 764-3900  
Surveyor: Texas Survey Firm No. 10103300  
McClure & Browne Engineering/Surveying, Inc.  
1008 Woodcreek Dr., Suite 103  
College Station, Texas 77845  
(979) 693-3838

SHEET NO.  
3  
OF 4 SHEETS

Owner:  
Ranier & Son Development Company, LLC  
4090 S.H. 6 South  
College Station, Texas 77845  
(979) 690-1222



Called 157.96 Acres  
Now or Formerly  
John & Yolanda Hall  
V.242, P.581

